

ProFotography

Issue 1
January 2021
\$5

ALL PORSCHE EDITION

CARS AND SUVs, OLD AND NEW

54 PAGES

Is it safe to come out?

PORSCHEs: ON THE ROAD, AT THE RACE TRACK, A CAR
SHOW, GARAGE QUEEN: MANY DIFFERENT MODELS

CONTENTS

Final Words & Legal

57

Photographer's Desk

4

My first PCA event, a road trip to Nellysford, VA and lunch.

APRIL 2002



On The Road

6

Watching summer afternoon cruising on Williamson Road in Roanoke, VA.

JULY 2004



Black and White

24



Black and White is a forgotten technique. Come explore the photo details in a black and white shot.

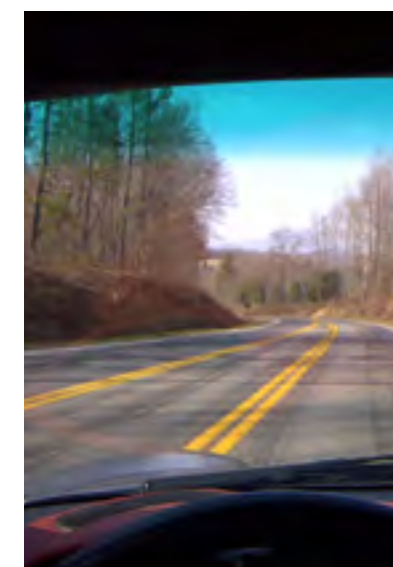
BLACK AND WHITE

On The Track

34

What is your view of the world? From the driver's seat this road offers beautiful views and fun curves. We should make our lives like that.

DRIVING FUN



In The Paddock

50

Six months after chemo treatments for breast cancer, Laura does a parade drive at a New London Fly-In.

JUNE 2004



Oddly Strange

54



Is this a Boxster or a 911? From the front it can be difficult to tell. Have you learned to tell the difference?

WHAT IS IT

From The Photographer's Desk



There will not be an **April 2021** edition of PROfotography Magazine due to Covid-19, and fewer photographing opportunities.

2020 is FINALLY over! But it appears Covid will not let up so we can return to some form of the previous normal. The effects of winter Covid are causing more restrictions as we await a vaccine. What will 2021 bring? Only time will tell, but I am hopeful better days are coming soon. In spite of what is happening we must remain positive.

This issue is about Porsche. My photograph archive is filled with Porsche vehicles in many settings. As a gear head I watch several types

of car races. When I attend a car event I always have my camera. From barn finds to restored cars, and everything in between, you will see them here.

I have an "eye" for the informal and unusual photo. Most of my photos are outdoors. The variety of opportunities outdoors is immense. From action on the track and on the road to scenic and humorous I like the many different things I photograph. I hope you enjoy this issue of PROfotography Magazine, and I hope you will "like" my photos on Facebook.

My Facebook page has photographs of recent and past photo shoots. Find me at: <https://www.facebook.com/PoetsVisions>. Also visit my website www.poetsvisions.com which also contains information and photographs.

Dave Hogan



(1986) My first Porsche was this 1974 Porsche 914 2.0L. With only 42,000 miles it needed some TLC and an engine rebuild due to a rod knock. The dealer had installed the center console, with oil temperature gauge, and did disconnect the oil temperature gauge in the dash. The result was a reading of 1/2 the actual oil temperature, and a badly overheated and damaged engine.



Did you know.....

95.1% of Buyers

look at photography over
everything on a listing?

The Hogan Group understands
the importance of using a
Professional Photographer on
ALL our listings. A picture is
worth a 1,000 words afterall!

The Hogan Group

1707 Summit Ave, Richmond, VA 23230

804.571.2900 Info@HoganGRP.com HoganGRP.com

Follow us on Instagram at [hogangroup](https://www.instagram.com/hogangroup)

ON THE ROAD



Left: (2012) Porsche cars at the [Biltmore Estate](#) in Asheville, NC. The estate tour was informative as well as visually stunning. Each car was driven in front of the building for a photograph.

Right: (2019) Three Porsche SUVs on the Blue Ridge Parkway at [Peaks of Otter Lodge](#) near Bedford, VA. While most people know Porsche cars, Porsche SUVs are quite popular.



Left: (2019) Porsches at the [Halcyon Days Cider Company](#) in Natural Bridge, VA. The cider was hard and tasty, as the tasting room provided many different samples.

Right: (2016) Porsches do not melt in the rain as this photo shows from a racetrack Porsche Corral during a thunderstorm.



(2020) When Covid stops organized activities, the Blue Ridge Parkway offers relaxing and scenic drives for individuals.

This is Porter Mountain Overlook. At 2100 feet it is high enough to offer good viewing. Blue sky, mountain views, and a Porsche, make this photo a good one.

Canon 5D Mark IV, 24-105L @ 24mm, F18, 1/320 sec, ISO 500





(2017) Porsches parked in front of a large dish antenna at [Pisgah Astronomical Research Institute \(PARI\)](#) in Rosman, NC. Originally a NASA site, it is now an educational and research facility.

Always watch for interesting shot opportunities.

Canon 70D, 24-105L @ 24mm, F8, 1/125 sec, ISO 100



Left: (2018) Porsche Cayman at an event at [Chateau Morrisette](#) in Floyd, VA. Do you like red?

Right: (2018) Porsche 911 Carrera at an event at Chateau Morrisette in Floyd, VA. The color almost matches the sky.



Left: (2018) Porsche Boxster at an event at Chateau Morrisette in Floyd, VA. It was too cold to have the top down this day.

Right: (2018) Porsche 911 Carrera at an event at Chateau Morrisette in Floyd, VA. Older than the one above, the shape remains the same.





(2019) A car drive included a stop at [Daniel Vineyards](#) in Crab Orchard, WV. A wine tasting with cheese and cookies made for a restful stop after a 125 mile drive through the West Virginia mountains, and it is a nice stop for scenery and photograph opportunities. A small thunderstorm blew by after arrival so everyone stayed inside in safety and comfort until the storm was gone.

Canon T7i, 24-105L @ 60mm, F4, 1/60 sec, ISO 200



(2019) These cars stopped at this grist mill in [Babcock State Park](#) in Clifftop, WV. The mill has scenic views, and visitors can walk along the creek and walk to the mill. The Porsche 4-door sedan (left) is another vehicle type made by Porsche as the Panamera. Canon T7i, 24-105L @ 35mm, F6.3, 1/160 sec, ISO 100



Left: (2019) The Porsche 914 was Porsche's entry level car in the 1970s. Made by Volkswagen and with a mid-engine, it was a great handling car on twisty roads, and it remains popular today.

Right: (2019) Porsche 911 coupe is timeless. Since 1963 the 911 remains in production and very similar in shape.



Left: (2020) The light rain did not keep these Porsche owners from the scheduled picnic. By early afternoon the sky cleared making the return trip more pleasant. Several Porsche types and models were represented.

Right: (2017) The different rear shapes of various Porsche models at a car show.





(2017) Night at the [Omni Grove Park Inn](#) in Asheville, NC. These four Porsches were parked in front of the lobby entrance, and there was light rain falling making everything shiny and the picture more appealing. There were around 200 Porsches there for a car club event. Canon 70D, 24-105L @ 47mm, F4, 3.2 sec, ISO 100



Left: (2006) The Porsche dealer in Roanoke, VA opened. It was a convenient location for the area, but it did not stay long.

Right: (2007) The Blue Ridge Mountains make an excellent backdrop for this cold group of Porsches at the former Millstone Tea Room near Bedford, VA.

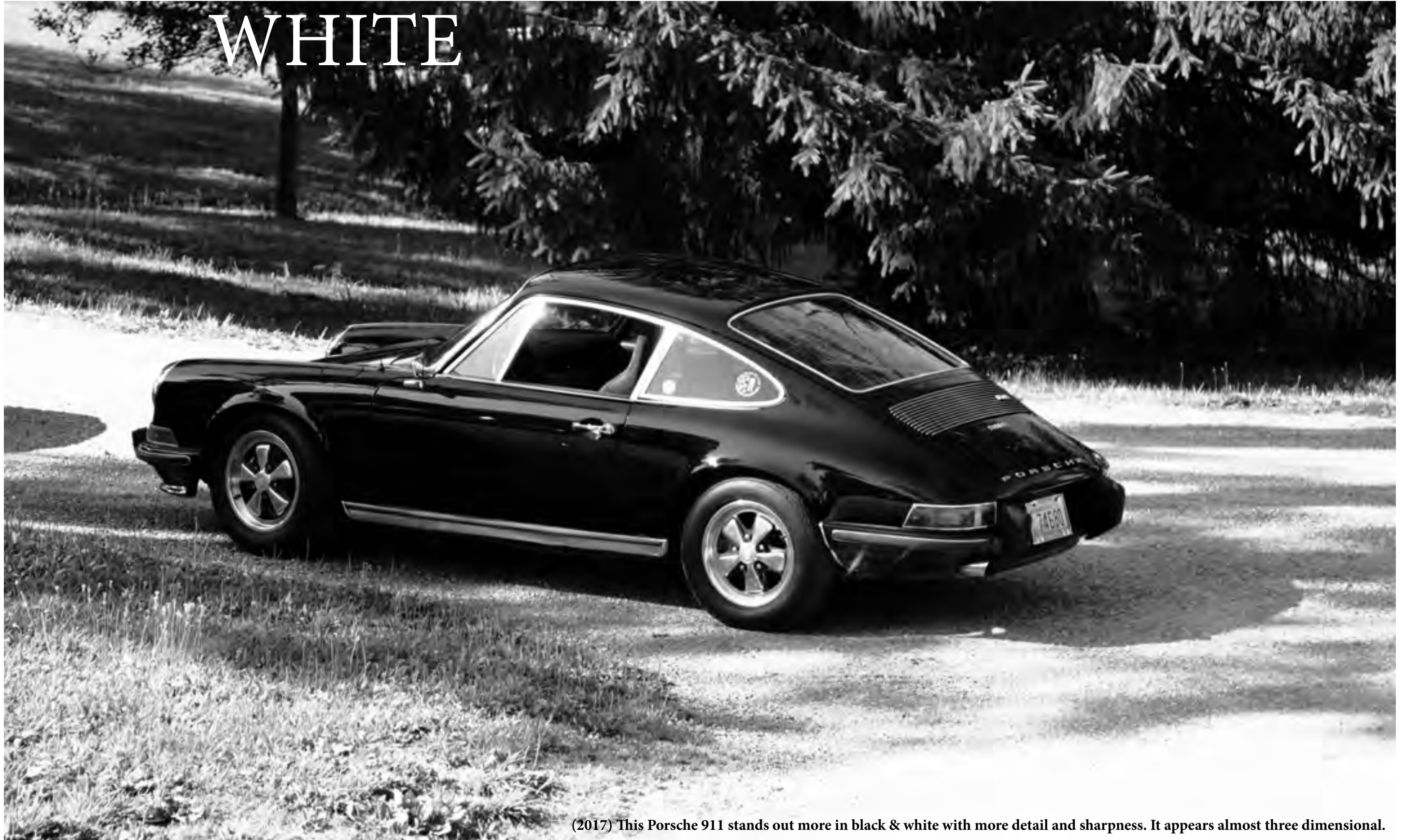


Left: (2006) The owner of this Porsche 356 was not around when the rain started at a New London Fly-In. It was very wet when he arrived to raise the top.

Right: (2008) A line of Porsches outside a Moneta, VA restaurant. Owners braved the cold February temperatures for me to get this photograph.



BLACK & WHITE



(2017) This Porsche 911 stands out more in black & white with more detail and sharpness. It appears almost three dimensional.



(2019) I shot this black and white photograph for the contrast between the light pavement and the dark car. This Porsche 911 Targa was at [The Resort at Glade Springs](#) in Daniels, WV. I also did the same shot in color, but I cannot decide which I like better. I often shoot in both color and black & white to have different views of the same thing.

Canon 70D, 24-105L @ 93mm, F6.3, 1/320 sec, ISO 200



(2019) Even in rain mixed with snow the Porsche owner drove to an event in Roanoke, VA. In black & white the streaks of the snowflakes are more easily seen.

(2020) Porsche's small SUV, the Macan. Black & white makes the shine and detail stand out. I think the reflections add to this photograph.

Canon 70D, 10-18 @ 16mm, F8, 1/160 sec, ISO 320





(2012) Steps going up a wall to the top of a hill, at the Biltmore Estate in Asheville, NC, adds horizontal aspects to the rounded cars.

ON THE RACE TRACK



(2015) Porsches #911 and #912 start first and second for this GTLM race as seen here during the fan walk. Canon 60D, 24-105L @ 35mm, F8, 1/200 sec, ISO 200

THE FIRST WERE FROM NEGATIVES



Left: (1988) Torno Porsche prototype car at [Sebring International Raceway](#) in Sebring, FL. If you like racing, the sights, sounds, and smells at the track make the experience.

Right: (1988) This Porsche GTU car had 2-way radios from GE Mobile Communications in Lynchburg, VA. At that time radios in race cars was in its infancy.



Left: (1988) Blaupunkt Porsche prototype at Sebring International Raceway in Sebring, FL. Many Porsche owners know that name from their car radio.

Right: (1988) Porsche turbo in the parking lot of the hotel in Winterhaven, FL. It was new then, and I wonder where it is today.





Left: (2013) A very colorful Porsche 911 from the [The Racers Group](#) on the racetrack during a race.



Right: (2013) A [Core Autosport](#) Porsche 911 on the racetrack during a race.



Left: (2012) A very colorful Porsche 911 from the [Effort Racing](#) team on the racetrack during a race.



Right: (2012) A Porsche 911 on the racetrack during a race.



Left: (2012) A very colorful Porsche 911 from the Momo team on the racetrack during a race.

Right: (2012) A **Flying Lizard Motorsports** Porsche 911 on the racetrack during a race.



Left: (2012) A very colorful Porsche 911 from the Momo team on the racetrack during a race.

Right: (2012) A Porsche 911 on the racetrack during a race.



(2019) A Porscheplatz at a racetrack is a very popular event. This one had almost 200 cars in the Porsche Corral (left edge background). The Porscheplatz was well attended by Porsche owners. Other brands have their own car corral.

Canon T7i 24-105L @ 93mm, F5, 1/250 sec, ISO 200



(2019) A spectator view of the racetrack at the start of the GTLM part of this race. This view is very different from most racetrack photographs. I was standing behind some of the spectators, and I wanted you to see what the race start looked like from that vantage point.

Always look for the unusual photograph opportunity.

Canon 70D, 100-400L @ 400mm, F7.1, 1/400 sec, ISO 100





Left: (2016) A full course caution caused by heavy thunderstorm rain delayed this race. Rain tires were not adequate for this amount of rain. The red flag came soon after.



Right: (2013) This pink Porsche Boxster was driven by one of the few female drivers on the circuit.



Left: (2012) The ultimate embarrassment, being towed back to the pits after a mechanical failure in this Porsche 944.



Right: (2013) This Porsche 911 driver negotiates Oak Tree Turn at Virginia International Raceway during a Driver Education event.



Left: (2015) A **Porsche GT3 Cup Challenge** race in progress. This corner is the scene of frequent off-track events, but usually no damage.

Right: (2020) The Porsche 911 cars of **Synergy Racing** which has its home at Virginia International Raceway.



Left: (2019) The start of a Porsche GT3 Cup Challenge race. I bet a Porsche GT3 wins this race.

Right: (2019) Judging by the amount of grass in the grill the Porsche #911 has been “mowing the grass” in an off-track excursion. A wet track provided a challenging handling experience for drivers.



IN THE PADDOCK



Left: (2014) In the paddock the Porsche #911 is prepared for the next round. Watching the paddock action provides insight into what it takes to prepare and maintain a race car.

Right: (2014) **The Heart of Racing** Porsche 911 is ready for competition. The crew finished final preparations and rolled it to the front.



Left: (2012) The Flying Lizard Porsche #44 is prepared for the next round. Some cars have very interesting names and sponsors.

Right: (2019) That is how I want my garage to look. Three Porsche GT3 cars in my garage could make my day.



(2019) Porsche Motorsport GT Team transporter in the paddock.

Canon T7i, 24-105L @ 45mm, F8, 1/320 sec, ISO 200



ODDLY STRANGE



Left: (2020) What Porsche do you see in your crystal ball? This person sees a Porsche Macan. Maybe it is a Turbo! There are so many choices, maybe the crystal ball will show two for you.

Right: (2014) This Porsche 356 appears to have a slight radiation problem. I wonder how that happened. Does it glow in the dark?



Left: (2020) When your Porsche does not have the Sport Chrono package, one must adapt. Stick on two pocket watches and keep your own time.

Right: (2019) This Porsche Cayenne Turbo owner must be careful in a powerful SUV. I wonder who his instructor is. It is likely his wife who I hear is a better driver.





(2014) This is a true barn find. This Porsche 911 is a very early example from the first factory build. Extremely valuable, it is being preserved as is. The only work will be to protect it from deterioration.

FINAL WORDS

2020 was a very bad year for the world. Worldwide pandemic, record hurricane season, and social unrest dominated most of the year. Sadly 2021 does not appear to be starting any better.

Photography opportunities were fewer and smaller. Trying to get photos of people in groups was nothing but

impossible.

Lastly, the uncertainty of our future is scary and produces much anxiety. Whether your participation in activities is very cautious, or very nonchalant please respect others and obey your requirements. Help us help ourselves! I pray for everyone wherever they are.

PROfotography Magazine

What You Normally Don't See

PROfotography Magazine is the quarterly magazine of PROfotograohy LLC and is currently free. For information, contact the Publisher.

Material in PROfotography Magazine is copyright, all rights reserved. Permission is NOT granted to reproduce published material without written permission and provided full credit is given to PROfotography Magazine. PROfotography Magazine assumes no responsibility for the accuracy of articles, services, or merchandise advertised herein. Statements appearing in PROfotography Magazine are those of the author and are not necessarily consistent with the views of the world.

Annual Commercial Ad Rates: \$ to be established at a later date.

Communications regarding articles, photos, and other material for PROfotography Magazine should be sent to the publisher. Deadline: the 10th of the month preceding publication.

Publisher: Dave Hogan
Virginia
PoetsVisions@verizon.net

Uncredited photos and articles are by the publisher.

CEL (Check Editor Light)

Please report any errors or omissions found in this magazine. Send corrections and/or suggestions to PoetsVisions@verizon.net

It Looks Like This Is The End

